

**1111 14th Street, NW
Washington, DC 20005**

Office Space

2,726 square feet (7th Floor)

Available

January 2012

Base Rental

\$38.00 per square foot

Lease Term

Five (5) to Ten (10) years

Security Deposit

Not less than one (1) month's full rent

Operating Expenses & Real Estate Taxes

Proportionate Share over base year

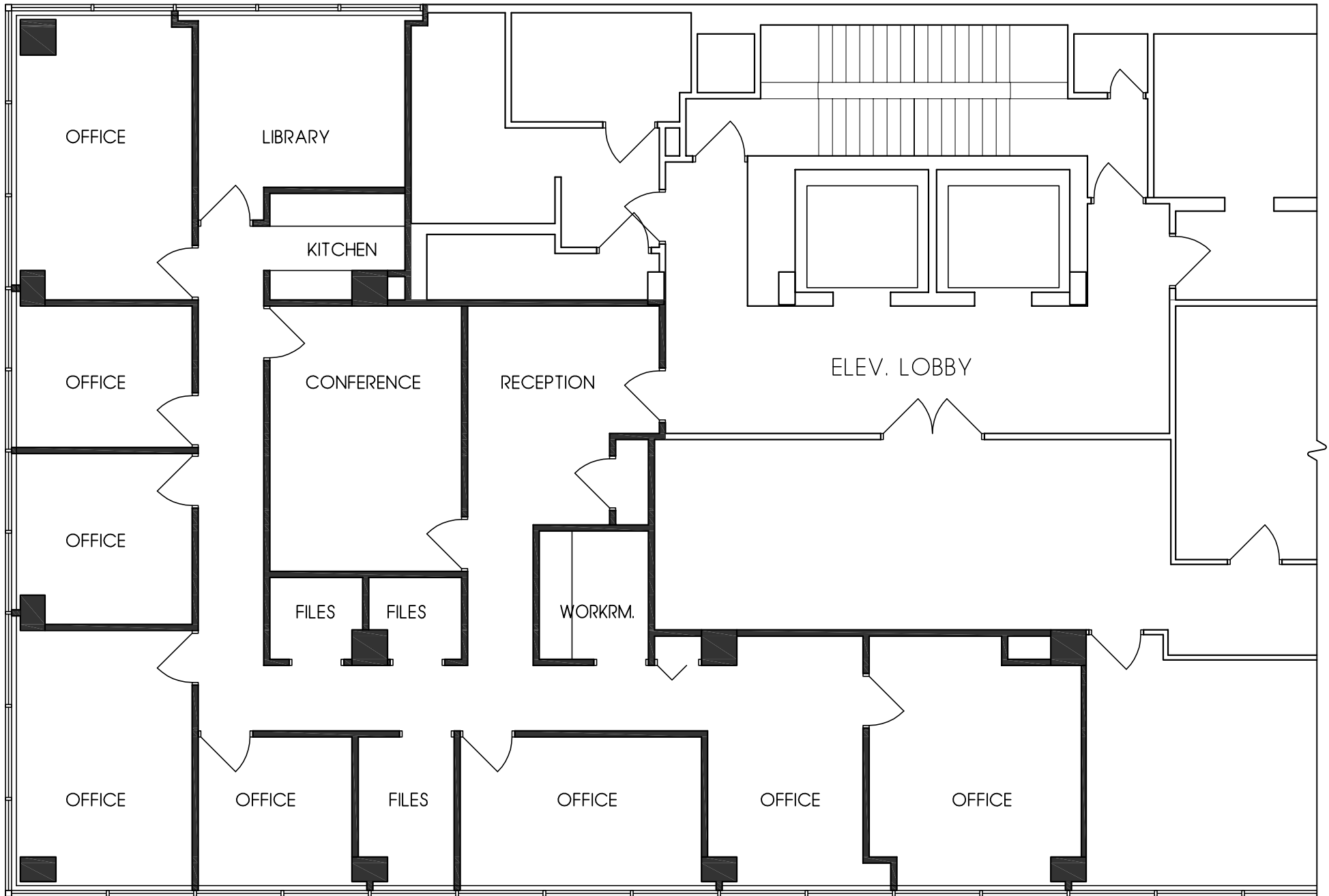
Location

14th & L Street just South of Thomas Circle, one and one half blocks from the McPherson Metro Station

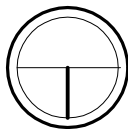
Description

All of the common areas were renovated which include new ADA compliance rest rooms, life/safety improvements - sprinkling of the entire building and a fire control system.





7TH FLOOR PLAN - SUITE AREA: 2,726 SQ. FT.



1/8"=1'-0"

